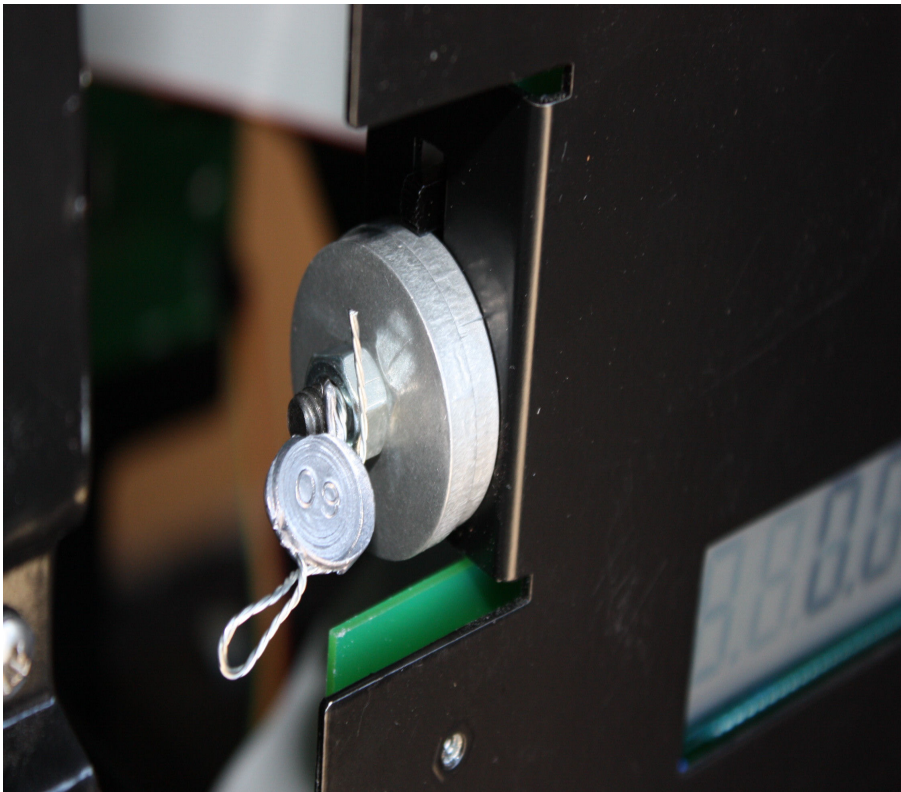


V. VRR-100 Electronic Calibration

The calibration procedure for the VRR is straight forward and uncomplicated. The calibration switch is located on the right side of the display board in this illustration.

The VRR Mechanical upgrade kit comes with a calibration washers and locking nut. After calibration a standard multi stranded steel wire calibration tag and threaded through the hole in the bolt as shown below and sealed with a metal crimp to prevent tampering.



STEP #1

If the dispenser has not been running, operate the dispenser for a few cycles through the calibration can to wet the system.

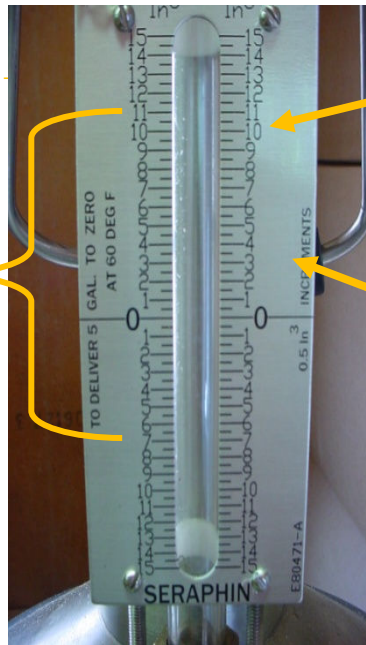
STEP #2

Remove the locking nut and washers from the side of the VRR display frame and move the calibration switch to the down position (turn "ON"). When in the full down position the screen will display the following.



STEP #3

The dispenser is ready to be calibrated. Turn on the dispenser handle and fill the 5 gallon calibration can until the meniscus shows in the sight tube on the side of the calibration can. Any number showing on the dispenser display should be disregarded and not used in the calibration procedure. Please follow the Weights & Measures Procedure for calibration. The 5 gallon test can should be “wet” and the procedure of a 30 second pour and 10 second drain should be followed.



The acceptable fill range for the VRR is +9.0 in . and -9.0 in .

Note: The scale on the calibration sight tube shown has + 15 in³ . and -15.0 in³ . increment range.

Filling Technique

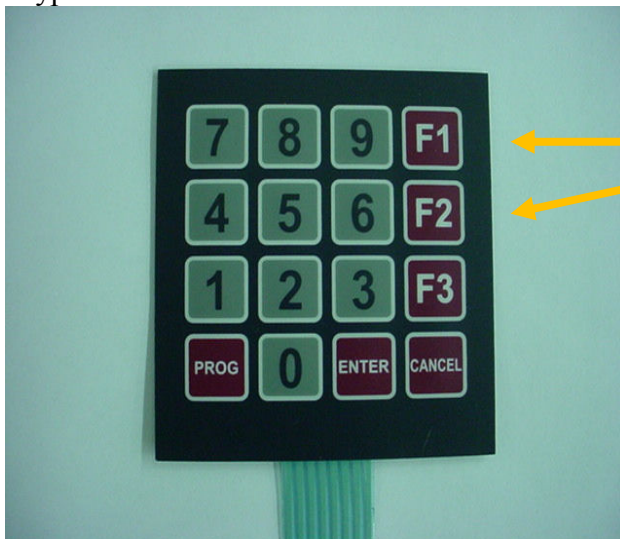
It is best if the calibration can is filled to within +/- 2.5 in³ and stopped. The system works best if a “0.0 in³” difference is NOT used.

STEP #4

When the 5 gallon Test can has a volume reading between +2.5 in and -2.5 in, turn the dispenser handle to the OFF position. Press the ENTER key on the key pad. The screen will show the following display.



Select either "ABOVE" or "BELOW" depending on whether the meniscus in the measuring can sight tube is below or above the "0" position. Press the respective "F1" or "F2" button on the keypad.



Press the "F1 or F2" button

"F1" for "ABOVE"
"F2" for "BELOW"

Press the “CANCEL” button twice to return the display to standard operation.

STEP #6

When the calibration is completed, return the calibration switch to the up position which will turn the calibration mode OFF. Reposition the Calibration washers and nut on the VRR Display frame board. Insert the calibration security wire through the hole in the calibration shaft and Crimp the wire lock on the calibration wires.

Properly positioned, the calibration wire will prevent the calibration switch from being moved into the ON position.

